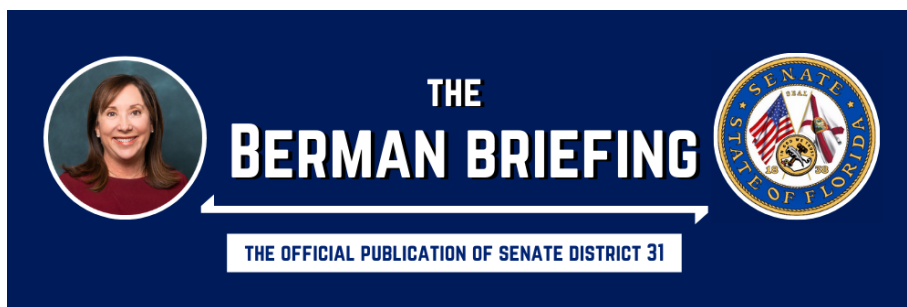


[View this email in your browser](#)



August 2022

Friends and Neighbors:

The summer is quickly flying by for many of us. I hope you're enjoying time off, vacationing and relaxing with your friends and family.

As we gear up towards the new school year, remember to be mindful of school buses and bus stops, and ultimately, our childrens' safety!

Stay well,

A handwritten signature in cursive script that reads 'April Berman' followed by a horizontal line.

Primary Election: Tuesday, August 23

All voters should have received a new voter card in the mail with instructions on where their new precinct is (if applicable), and new distict numbers (if applicable).

For any further questions or concerns, you may go to the [PBC Supervisor of Elections website](#) or call **561.656.6200**.

1 VOTE-BY-MAIL

REQUEST IT Visit VotePalmBeach.gov, call (561) 656-6208, or email votemail@votepalmbeach.gov
Deadline to request a Vote-by-Mail ballot to be mailed to you is 5:00 p.m. on Saturday, August 13, 2022. A mail ballot can be requested in person until 5:00 p.m. on August 22, 2022. Please have your Driver License, Florida ID card, or the last 4 digits of your Social Security number available when making your request.

RETURN IT Mail your Vote-by-Mail ballot using pre-paid postage, or drop it off inside any of our four offices during business hours. You may also drop it off at designated drop off locations across the county starting August 8, 2022.

TRACK IT Visit the "My Status" page at VotePalmBeach.gov
***Your ballot must be received at the Main Elections Office by 7:00 p.m. on Election Day, August 23, 2022. ***

2 EARLY VOTING

Monday, August 8, 2022 - Sunday, August 21, 2022.
Polls are open from 10:00 a.m. to 7:00 p.m.

Registered voters in Palm Beach County can vote at any Early Voting location. You may drop off your Vote-by-Mail ballot in-person at any of our four office locations or at any Early Voting location during Early Voting hours.

3 ELECTION DAY

Election Day is Tuesday, August 23, 2022.
Polls are open from 7:00 a.m. to 7:00 p.m.

On Election Day, you must vote at the polling place that is assigned to your precinct. Know where to vote and what to bring by visiting VotePalmBeach.gov or call (561) 656-6200.

KNOW YOUR VOTER ID CARD

Your Voter Information Card will reflect any voting district, precinct number, and polling place change resulting from redistricting.

The deadline to register to vote or change party is July 25, 2022

Wendy Sartory Link
Palm Beach County Supervisor of Elections

[f](https://www.facebook.com/VOTE) [i](https://www.instagram.com/VOTE) [in](https://www.linkedin.com/company/VOTE) [yt](https://www.youtube.com/channel/UC...) [@VotePalmBeach](https://www.tiktok.com/@VotePalmBeach) VotePalmBeach.gov

240 South Military Trail, West Palm Beach, FL 33415 | (561) 656-6200 | (561) 656-6287

Early voting sites with secure ballot intake stations

Secure Ballot Intake Station

WEST COUNTY AREA MAP

1 Jupiter Community Center
200 Military Tr, Jupiter

2 Florida Atlantic Univ - Jupiter Campus
5823 Portofino Dr, Jupiter

3 Gardens Branch Library
11000 Campus Dr, Palm Beach Gardens

4 Wells Rye Community Center
2409 Avenida H West, Riviera Beach

5 Acreage Branch Library
15001 Charge Blvd, Loxahatchee

6 SOE West County Branch Office
2976 State Road #5, 2nd floor, Belle Glade

7 Belle Glade Branch Library
725 NW 4th St, Belle Glade

8 Howard Park Community Center
1362 Parker Ave, West Palm Beach

9 South Florida Fairgrounds
9007 Southern Blvd, West Palm Beach

10 Summit Main Library
3450 Summit Blvd, West Palm Beach

11 Wellington Branch Library
1951 Royal Fern Dr, Wellington

12 Greenacres Community Center
505 South Blvd, Greenacres

13 Lantana Road Branch Library
4020 Lantana Rd, Lake Worth

14 East Haver Community Center
1001 N Seacrest Blvd, Boynton Beach

15 Hagen Branch Road Branch Library
14200 Hagen Branch Rd, Delray Beach

16 Delray Beach Community Center
50 NW 1st Ave, Delray Beach

17 South County Civic Center
16200 100th Rd, Delray Beach

18 West Boca Branch Library
3985 State Road 7, Boca Raton

19 Spanish River Library
400 NW 2nd Ave, Boca Raton

20 Boca Raton Downtown Library
1601 NW Spanish River Blvd, Boca Raton

21 Sugar Sand Park Community Center
300 S Military Tr, Boca Raton

22 SOE North County Branch Office
Northwest County Courthouse
3188 P.G.A. Blvd, RM #240, PFG

23 SOE Main Office
240 S Military Tr, West Palm Beach

24 SOE South County Branch Office
Southwest PFG Administrative Complex
246 S Congress Ave, RM #603, Delray Beach

EARLY VOTING LOCATION HOURS

Monday, August 8 - Sunday, August 21 - 10:00 a.m. to 7:00 p.m.

SECURE BALLOT INTAKE STATION HOURS

Monday, August 8 - Monday, August 22 - 8:30 a.m. to 7:00 p.m.
Tuesday, August 23 - 7:00 a.m. to 7:00 p.m.

West, North & South Branch Offices ONLY

Monday, August 8 - Friday, August 12 - 8:30 a.m. to 5:00 p.m.
Monday, August 15 - Monday, August 22 - 8:30 a.m. to 5:00 p.m.
Tuesday, August 23 - 7:00 a.m. to 5:00 p.m.

Secure Ballot Intake Station hours established pursuant to Florida SB 9(2021) and state law.

Vote-by-Mail ballots may be returned at any Early Voting location during Early Voting hours, at a Secure Ballot Intake Station, or one of our four offices during office hours.

Vote-by-Mail ballots must be received by the Main Office by 7:00 p.m. on Election Day.

ELECTION DAY IS TUES. AUG. 23, 2022

For more information: VotePalmBeach.gov | (561) 656-6200

BECOME A POLL WORKER!

JOIN US ON THE FRONT LINES OF DEMOCRACY!

ON ELECTION DAY 5,000 POLLWORKERS ARE NEEDED TO STAFF THE PRECINCTS OF PALM BEACH COUNTY

POLL WORKER REQUIREMENTS

- Be a registered OR pre-registered voter in Palm Beach County.
- Read, write and communicate in English.
- Attend mandatory training prior to each election.
- Remain nonpartisan while serving as a poll worker.
- Arrive at the assigned polling place by 5:30 A.M.
- Work a long, 14+ hour day.
- Provide an active email account.
- Customer service oriented.
- Be able to lift 15-30 lbs.
- Serve all voters promptly, courteously and with sensitivity to voters with special needs.

DO YOUR CIVIC DUTY! GET PAID!

APPLY NOW!
561-656-6200 OPTION 3
VOTEPALMBEACH.GOV

Wendy Sartory Link
Palm Beach County Supervisor of Elections
VotePalmBeach.gov

Social Gatherings, Safer Sex and Monkeypox

Monkeypox is a disease caused by a virus (monkeypox virus) not commonly seen in the United States. Monkeypox can cause a rash which may look like pimples or blisters, sometimes with a flu-like illness. While CDC works to contain the current outbreak and learn more about the virus, it is important that you have information so you can make informed choices when you are in spaces or situations where monkeypox could be spread. As new information becomes available, CDC will continue to update the CDC monkeypox website to help keep you informed.

How is monkeypox spread?

Monkeypox can spread to anyone through close, personal, often skin-to-skin contact including:

- Direct contact with monkeypox rash, scabs, or body fluids from a person with monkeypox. We believe this is currently the most common way that monkeypox is spreading in the U.S.
- Touching objects, fabrics (clothing, bedding, or towels), and surfaces that have been used by someone with monkeypox.
- Contact with respiratory secretions.

This contact can happen during intimate contact including:

- Oral, anal, and vaginal sex or touching the genitals (penis, testicles, labia, and vagina) or anus (butthole) of a person with monkeypox.
- Hugging, massage, and kissing.
- Prolonged face-to-face contact.
- Touching fabrics and objects during sex that were used by a person with monkeypox and that have not been disinfected, such as bedding, towels, fetish gear, and sex toys.

What are the symptoms of monkeypox?

- You may experience all or only a few of the symptoms of monkeypox.
- Most people with monkeypox will get a rash. Some people have developed a rash before (or without) flu-like symptoms.
- Monkeypox symptoms usually start within 3 weeks of exposure to the virus.
 - The flu-like symptoms may include fever, headache, muscle aches and backache, sore throat, cough, swollen lymph nodes, chills, or exhaustion.
 - If someone has flu-like symptoms, they will usually develop a rash 1-4 days later.
- The rash may be located on or near the genitals or anus but could also be on other areas like the hands, feet, chest, or face.
 - The rash will go through several stages, including scabs, before healing.
 - The rash can look like pimples or blisters and may be painful or itchy.
 - The rash may also be inside the body, including the mouth, vagina, or anus.



Monkeypox can be spread from the time symptoms start until the rash has healed, all scabs have fallen off, and a fresh layer of skin has formed. This can take several weeks.

What are researchers investigating?

- If the virus can be spread when someone has no symptoms
- If the virus could be present in semen (cum), vaginal fluids, and fecal matter (poop)
- How effective the current smallpox vaccines are for the prevention of monkeypox illness



Palm Beach County, Fla – The Florida Department of Health in Palm Beach County (DOH-Palm Beach) is responding to the monkeypox outbreak. There are cases of monkeypox in at least 43 states and Washington DC. To date, there have been no monkeypox-related deaths outside of endemic countries. The risk of monkeypox to the general population remains low.

DOH-Palm Beach continues to conduct epidemiological investigations to notify possible exposures and offer potential post-exposure prophylaxis. DOH-Palm Beach will offer the monkeypox vaccine to high-risk groups as doses become available from the federal government.

Up to date information on monkeypox is available at [FloridaHealth.gov](https://www.floridahealth.gov/diseases-and-conditions/monkeypox). Case data for monkeypox, as well as other reportable diseases, can be found on [FLHealthCharts.gov](https://www.flhealthcharts.gov).

Prevention and Treatment

If health care providers suspect a possible case of monkeypox, immediately [contact your local health department](#) or the 24/7 disease reporting hotline at 850-245-4401. Local county health departments can help providers obtain monkeypox virus-specific real-time polymerase chain reaction (PCR) testing.

Human-to-human transmission generally requires prolonged, face -to-face contact, direct contact with lesion materials, or indirect contact with lesion materials through contaminated items, such as contaminated clothing. Therefore, the risk of exposure remains low.

Health care providers should remain vigilant of information related to monkeypox:

- [Monkeypox symptoms](#), especially among individuals with [relevant travel history](#).
- [Transmission and incubation](#)
- [Specimen collection](#).
- Infection control procedures in the [home](#) and [hospital](#)
- [Clinical recognition](#), and the [characteristic rash](#) associated with monkeypox.
- [Prophylaxis and possible treatments](#) for monkeypox.
- Monitoring of those [exposed to monkeypox](#).

The public should also remain vigilant of the current meningococcal outbreak. Demographic impacts are similar among meningococcal and monkeypox cases.

The [meningococcal vaccines](#) are available to high-risk populations at every county health department, free of charge.

Floridians can find more information on meningococcal disease [here](#).

"Back to School" Sales Tax Holiday



We are in the midst of the "Back to School" Sales Tax Holiday.

Eligible items that consumers can purchase tax-free include:

- Clothing, footwear, and certain accessories with a sales price of \$100 or less per item;
- Certain school supplies with a sales price of \$50 or less per item;
- Learning aids and jigsaw puzzles with a sales price of \$30 or less; and
- Personal computers and certain computer-related accessories with a sales price of \$1,500 or less, when purchased for noncommercial home or personal use.

More information about what can be purchased tax-free can be found [here](#).

Sip & Shop

 in support of
Women's Rights

The Future is Female

Mon, Aug 22nd



Lori Berman
Florida Senator

10:15 am

Join Florida Senator, Lori Berman,
as she speaks about Women's Rights

10:30 am

Women's Charity Cycle Class

Charity Raffle*

*100% of proceeds donated to Planned Parenthood

RSVP to info@vault.fit

*Portion of
Proceeds
donated

25% OFF

ALL APPAREL | AUG 22 - 28TH

VAULT FITNESS
BOCA RATON

9930 CLINT MOORE RD, D101
BOCA RATON, FL 33496
WWW.VAULT.FIT

Mind Your Business 3rd Annual Youth Entrepreneurship Forum

The Palm Beach County Office of Equal Business Opportunity (OEBO) is hosting the Mind Your Business 3rd Annual Youth Entrepreneurship Forum. The forum will be presented virtually on Zoom, August 4 from 6 to 8 p.m. The event is free for youths ages 8 to 18.

Mind Your Business features three workshops: "Boss Moves" presented by Dominique Ford, "Network or Not Work" presented by Corey Jones and "Brand

“Palm Beach County is committed to investing its resources in the small business and entrepreneurship community in this county. That includes our youngest business owners. Mind Your Business is in its third year, and our goal is to effectuate the spirit of entrepreneurship,” said Tonya Davis Johnson, director of OEBO. “By encouraging and teaching entrepreneurship, there is, in the long run, a benefit not only to these business owners but the county as well”.

If interested in attending this event, please register at

<https://survey.pbcgov.com/s3/OEBO-Mind-Your-Business>. It is free, and the public is invited. For details, call 561-616-6840 or email asmith5@pbcgov.org.

The Zoom link to attend is:

<https://pbcgov.zoom.us/meeting/register/tZlqfu6qrTwqGtPCGwZp0FHrr7nZu48LhjMz>.



Please Join us to CELEBRATE

We are so happy to be celebrating the culmination of Women Build 2022 and the many people like you who helped make the dream of home ownership a reality for the Lane and Volmard families.

Please join us to help welcome these two families into their new homes.

August 10, 2022 at 4:00 pm

825 SW Avenue C, Belle Glade 33430

For more information or to RSVP please contact Sam Cassino at samanthac@habitatpbc.org or 561-292-0940

About the Volmard Family

Elione Volmard is originally from Haiti, and has been living in Belle Glade for over 21 years. Elione will be sharing her home with her daughter, Solene. Elione and Solene are looking forward to hosting gatherings with their extended family in their new home. Elione is proud to be achieving her goal of becoming a homeowner and for demonstrating the benefit of hard work and dedication to her daughter.

About the Lane Family

Shaquasha Lane was born and raised in Belle Glade. She is the mother of three beautiful boys; nine-year-old Tyler, two-year-old Giovanni and 6-month-old Bleu. Tyler loves to play sports; his favorites are soccer and basketball. Tyler's dream is to grow up and become a scientist. Giovanni is full of energy and he loves anything that is musical. Bleu is a very happy baby who loves to laugh and smile. Shaquasha recently began an exciting new career with the Palm Beach County Sheriff's office. Shaquasha is looking forward to seeing her boys grow up in their new home.



"My dream for the future is to see my daughter succeed and continue my education. A Habitat home will help me realize my both of those dreams." - Elione



"Being accepted into the Habitat program has already changed my life. I have new hopes and dreams for my sons and I am happy I am able to provide them with a stable place to call home." -Shaquasha

In Partnership With

The City of Belle Glade
Carrier Corporation
The Breakers
The Batchelor Foundation

FPL
The GEO Group
Unity Construction
Women Build 2022 participants and donors

Recycle Your Unused Pool Supplies



SWA.org/HCRC

PBC Residential Disposal Only. For commercial disposal, call 561-687-1100.

Summertime is prime for playing on the patio: grilling out, splashing in the pool, and sprucing up the landscaping.

Just keep in mind that the following items:

- Propane tanks

Should never be placed in the garbage. Palm Beach County residents may bring these 3Ps to one of the SWA's seven Home Chemical and Recycling Centers (HCRC) listed below, where they will be recycled or disposed of properly.

The SWA's HCRC locations include (from north county to south county):

- **Jupiter**
North County Transfer Station
14185 Military Trail (SWA Road) in Jupiter
Monday - Friday: 7 a.m. - 5 p.m.
Saturday: 7 a.m. - 3 p.m.
- **West Palm Beach**
Home Chemical and Recycling Center
6161 N. Jog Road in West Palm Beach
Monday - Friday: 7 a.m. - 5 p.m.
Saturday: 7 a.m. - 5 p.m.
- **Belle Glade**
Glades Regional Transfer Station
1701 State Road 15 in Belle Glade
Monday - Friday: 7:30 a.m. - 4 p.m.
- **Royal Palm Beach**
West Central Transfer Station
9743 Weisman Way in Royal Palm Beach
Monday - Friday: 7 a.m. - 5 p.m.
Saturday: 7 a.m. - 3 p.m.
- **Lantana**
Central County Transfer Station
1810 Lantana Road in Lantana
Monday - Friday: 7 a.m. - 5 p.m.
Saturday: 7 a.m. - 12 p.m.
- **Delray Beach - West**
Southwest County Transfer Station
13400 S. State Road 7 in Delray Beach
Monday - Friday: 7 a.m. - 5 p.m.
Saturday: 7 a.m. - 3 p.m.

1901 SW 4th Ave. in Delray Beach
Monday - Friday: 7 a.m. - 5 p.m.
Saturday: 7 a.m. - 3 p.m.

Commercial interests should call 561-687-1100 for disposal options.

In the last fiscal year, Palm Beach County residents safely disposed of or recycled more than 4.9M pounds of home chemicals. This included more than:

- [20,000 pounds of Pool chemicals](#)
- 47,000 pounds of Pesticides and
- 230,000 pounds of Propane tanks

Remember, *pollution prevention starts at home*. Visit SWA.org/HCRC [swa.org] or call 561-697-2700 or 866-792-4636 (toll-free) to learn more about the Solid Waste Authority of Palm Beach County's Home Chemical and Recycling Centers.

Lake Worth
LAGOON
FISHING
CHALLENGE

SUMMER 2022

JULY 23RD THROUGH AUGUST 7TH

PARTICIPATE IN A CITIZEN-SCIENCE "CATCH AND RELEASE"
FREE TOURNAMENT!

**WIN OVER
 \$1,000
 in PRIZES!**

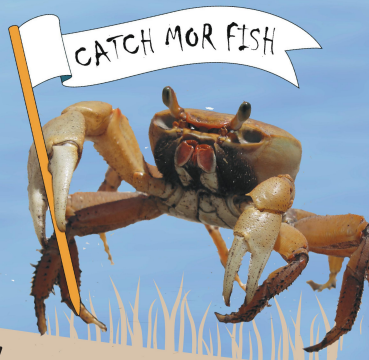


**YOU CAN BE A WINNER
 AFTER YOUR 1ST LOGGED
 CATCH IN THE WEEKLY
 RANDOM DRAW!**

REGISTER NOW!

IANGLER REGISTRATION HERE:
<https://www.ianglertournament.com/2022-summer-lake-worth-lagoon-fishing-challenge>

MORE DETAILS FOUND HERE:
<https://discover.pbcgov.org/erm/LWLagoon/Fishing-Challenge.aspx>



SPECIAL THANKS TO OUR DONORS AND PARTNERS!



Palm Beach County Board of County Commissioners
 Robert S. Weinroth, Mayor, Gregg K. Weiss, Vice Mayor, Maria G. Marino, Dave Kerner
 Maria Sachs, Melissa McKinlay, Mack Bernard
 Department of Environmental Resources Management pbcern.com 561-233-2400



Google Alerts Lori Berman

Daily update · [July, 2022](#)

NEWS

[Ocala.com](#)

Purple Alerts are a new alert, authorized for use effective July 1, aimed at protecting adults with intellectual and developmental disabilities.



[U.S. Rep. Frankel, Sen. Lori Berman discuss actions to protect abortion access - YouTube](#)

[YouTube](#)

U.S. Rep. Lois Frankel and other local leaders spoke Monday about actions to protect access to abortion and the impact of Florida's recently ...



[Frankel, advocates discuss actions to protect abortion access - WPTV](#)

[WPTV](#)

Lori Berman and other local advocates for a news conference outside the federal courthouse in downtown West Palm Beach.



[Palm Beach Gardens woman tells of her abortion experience as Democrats vow to protect rights](#)

[Palm Beach Post](#)

U.S. Rep. Lois Frankel and state Sen. **Lori Berman** talk about plans for legislation to codify Roe v. Wade, overturn Florida's 15-week abortion ban.



[Jay Collins, Janet Cruz both see cash surge from incumbent Senators in big-time race](#)

[Florida Politics](#)

Lori Berman. All in all, Cruz's committee reported \$70,000 in the latest June finance period, which spans from June 18 through July 1.





District Office

2300 High Ridge Road
Suite 161
Boynton Beach, FL, 33426
(516) 292-6014



Tallahassee Office

218 Senate Office Building
404 South Monroe Street
Tallahassee, FL 32399
(850) 487-5031



Email

berman.lori.web@flsenate.gov

**CONTACT
US**



Facebook

facebook.com/loribermanfla



Twitter

@loriberman



Instagram

@senloriberman



This email was sent to <<Email Address>>

[why did I get this?](#) [unsubscribe from this list](#) [update subscription preferences](#)

Florida Senate · 2300 High Ridge Road, Suite 161 · Boynton Beach, FL 33426 · USA